

TRIO System Requirements

- Windows XP, Vista, 7 or 8 – Windows Server 2003, 2005, 2008 or 2012
- 1GHz processor, 1 GB ram and a 20 GB free hard drive space.

Preparing the New Workstation

❖ Locate TRIO Data Directory

1. Go to an **existing TRIO workstation** and **start TRIO**.
2. Select **Help > About** from the top of the screen and note the **Data Directory**.

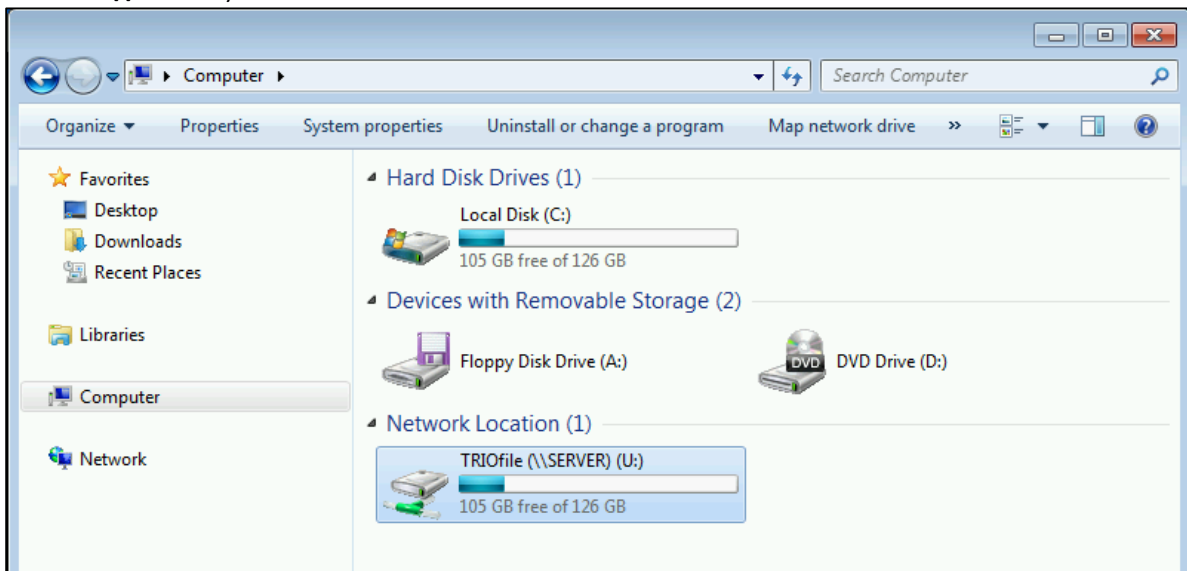
GN Executable Date	01/07/2014
Data Directory	u:\triodata

❖ Locate Share Name and Server Name

1. **Click Windows Explorer** from the **Start Bar**.

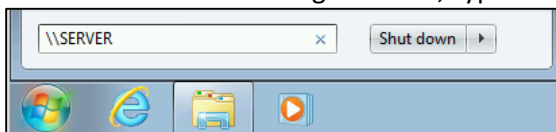


2. On the left **Click Computer**, this will display all the drives on this computer. Find the drive that has the same drive letter as your Data Directory. The Share Name and Server Name will be found to the left of your drive letter. (Example: The **Share Name** is **TRIOfile** and the **Server Name** is **\\SERVER**)



❖ Map a Network Drive to your Server

1. On the **New Workstation** go to **Start**, type the **Server Name** in the **Search Box** and **press Enter**.

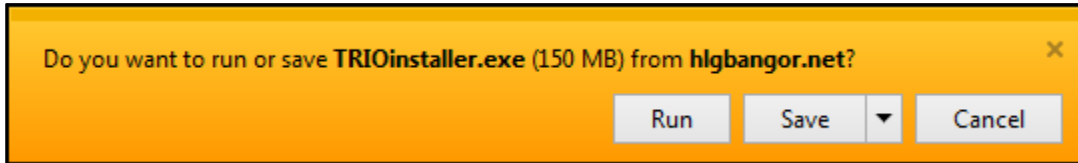


2. **Right click** the **Share Name** (Example: **TRIOfile**) and Click **Map network drive...**
3. **Select** the same **Drive letter** as used on the existing TRIO workstation.
4. **Click Finish**

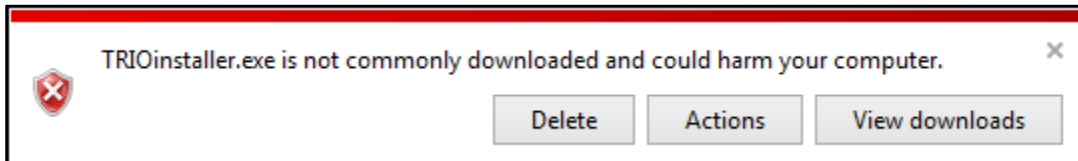
Installing TRIO From the Web

❖ Download the TRIO installer files

1. **Click** this **link** or copy it into the address bar of your internet browser:
<http://www.hlgbangor.net/trio/TRIOinstaller.exe>
2. If prompted, select **Run** to start the download.



3. If prompted once the download completes, select **Actions > More Options > Run Anyway** which will start the TRIO installation program.



❖ Running the TRIO Installer

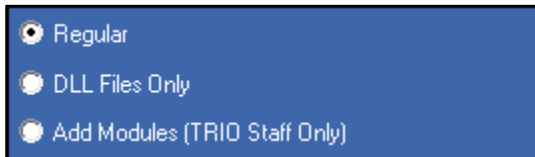
1. Choose your **TRIO Data Directory** and click **Next**.



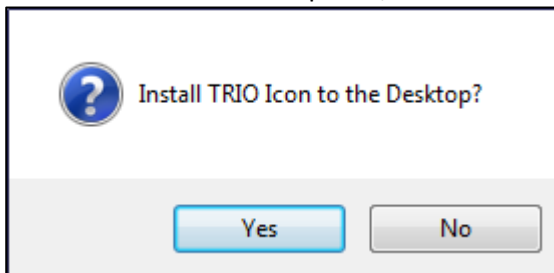
2. Select **No Backup** and click **Next**.



3. Select **Regular** and click **Next**.



4. Once the installation completes, select **YES** to install a TRIO icon on the desktop.



5. You may be asked to restart your computer after the install. If so please do before using TRIO.